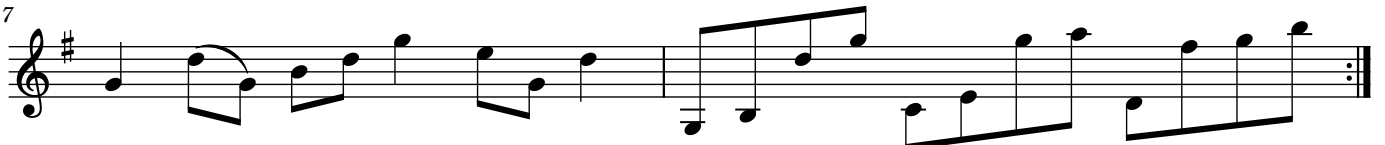
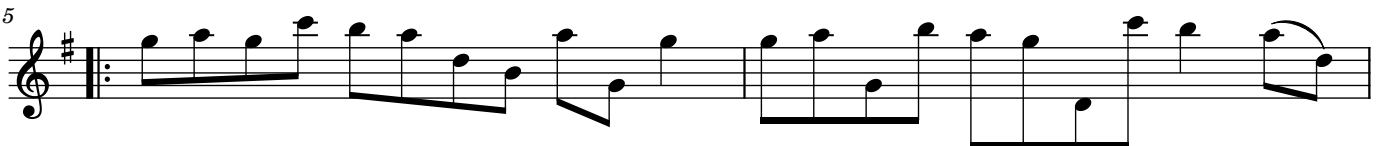


Denise MacColl

Composed by John C Grant

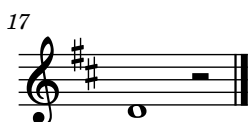
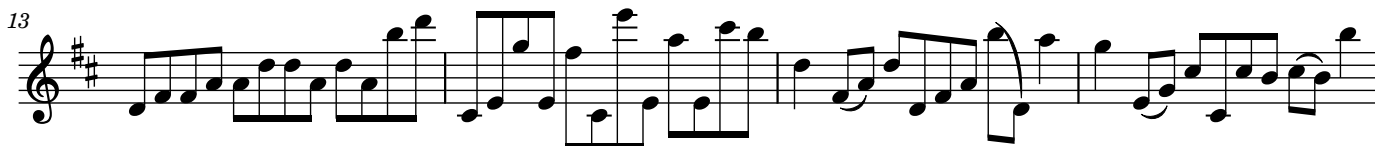
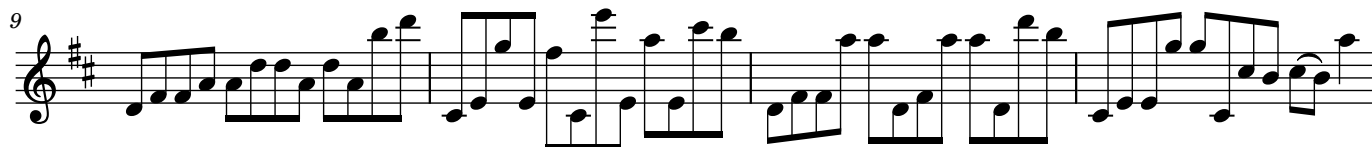
Reel



Dr Fiona McKenzie OBE

Composed by John C Grant

Air



Gallowhill Avenue

Composed by John C Grant

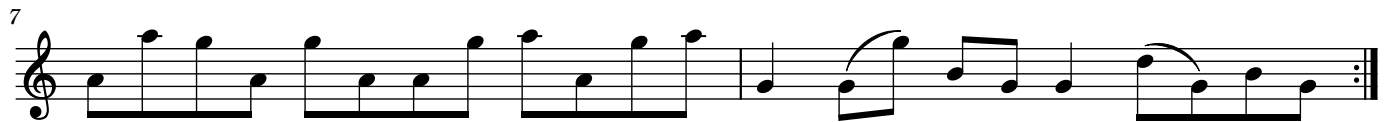
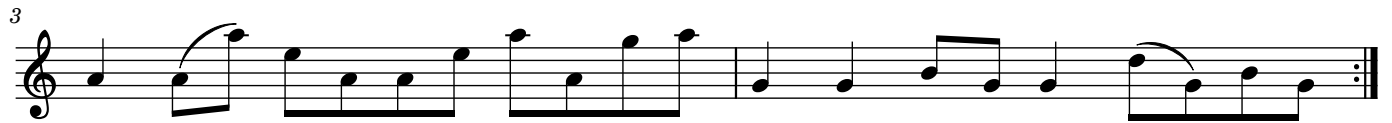
Reel



John Burns

Composed by John C Grant

Reel



Johnie Ged

Composed by John C Grant

Reel

The musical score for 'Johnie Ged' is presented in a single system with eight staves. The key signature is three sharps (F#, C#, G#) and the time signature is 3/4. The music is written in treble clef. The score consists of eight staves, each containing a line of music. The first staff begins with a treble clef, a key signature of three sharps, and a 3/4 time signature. The music is characterized by a series of eighth notes, many of which are grouped into triplets, indicated by a '3' above the notes. Slurs are used to group notes within the triplets and across measures. The score includes repeat signs (double bar lines with dots) at the end of the first, third, fifth, seventh, and eighth staves. The eighth staff concludes with a double bar line and a repeat sign.

Mansefield Road

Composed by John C Grant

Reel



Martin Trainer

Composed by John C Grant

Reel



Parliament Close

Composed by John C Grant

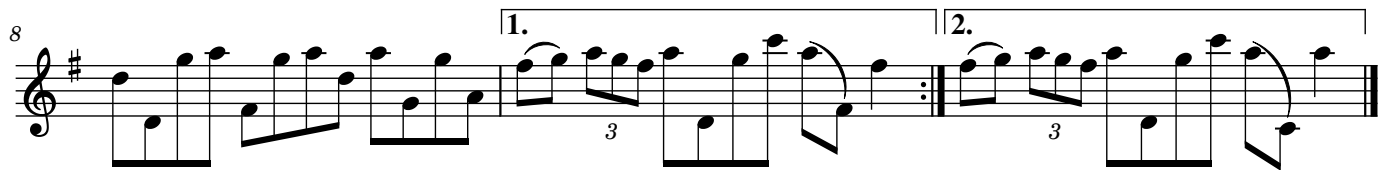
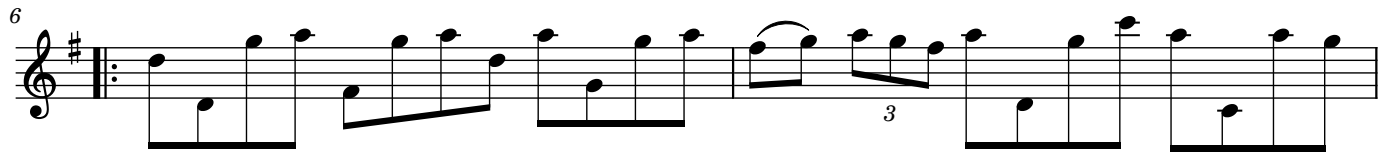
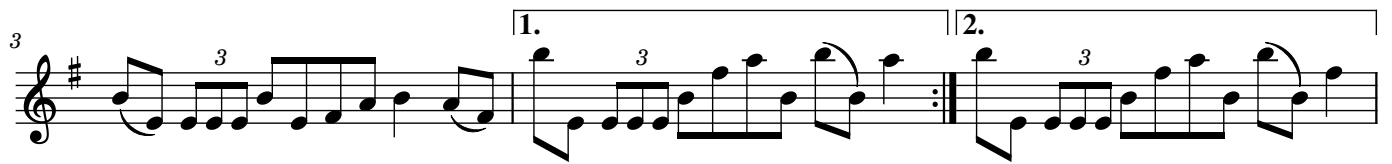
Reel



Saunders Tait

Composed by John C Grant

Reel



Scott Bowden

Composed by John C Grant

Reel



Sean Maddocks

Composed by John C Grant

Reel



Tarbolton Gospel Hall

Composed by John C Grant

Reel

