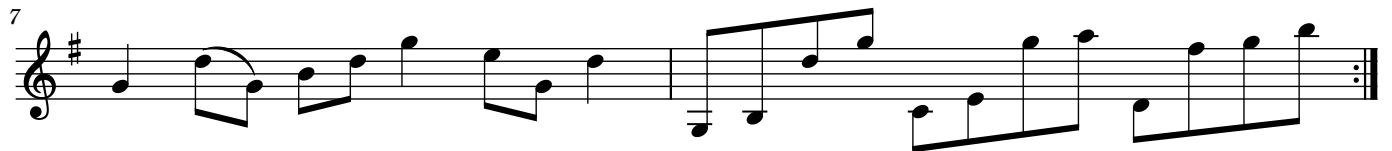
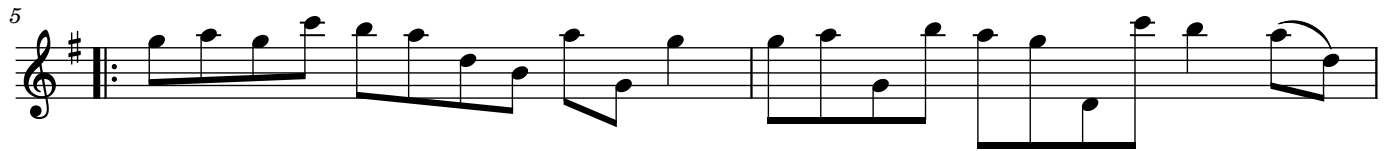


# Denise MacColl

Composed by John C Grant

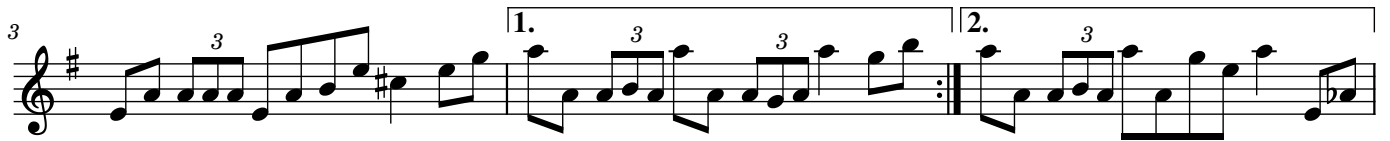
Reel



# Gallowhill Avenue

Composed by John C Grant

Reel



# Johnie Ged

Composed by John C Grant

Reel

The musical score for 'Johnie Ged' is written in treble clef, key of D major (two sharps), and 3/4 time. It consists of a single melodic line with a total of 15 measures. The piece is a reel, characterized by its 3/4 time signature. The melody is composed of eighth and sixteenth notes, with several triplet markings (indicated by a '3' above the notes) and repeat signs (double bar lines with dots) used to structure the piece. The score is divided into eight systems, with measure numbers 3, 5, 7, 9, 11, 13, and 15 marking the beginning of each system. The final measure of the piece ends with a double bar line and repeat dots.



# Mansefield Road

Composed by John C Grant

Reel



# Martin Trainer

Composed by John C Grant

Reel



# Parliament Close

Composed by John C Grant

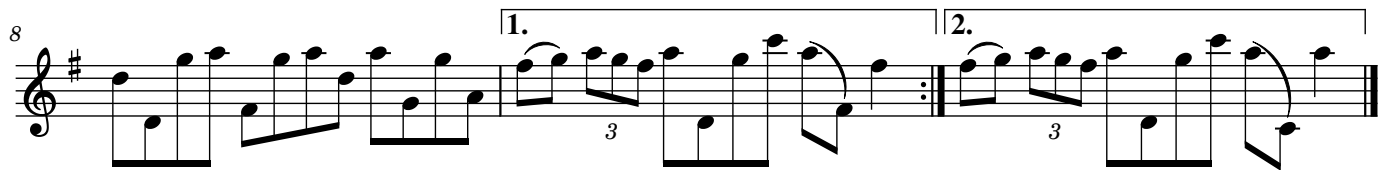
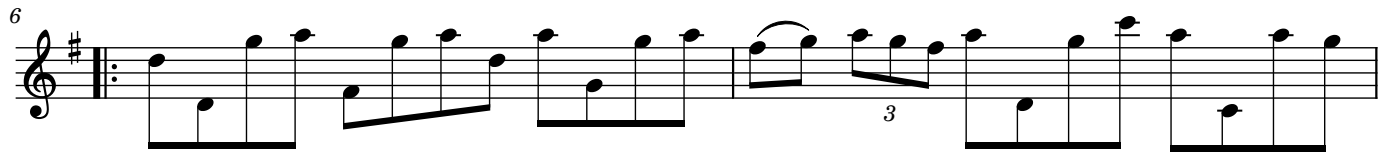
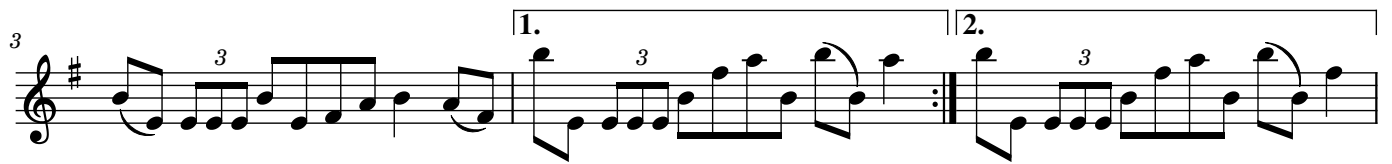
Reel



# Saunders Tait

Composed by John C Grant

Reel





# Scott Bowden

Composed by John C Grant

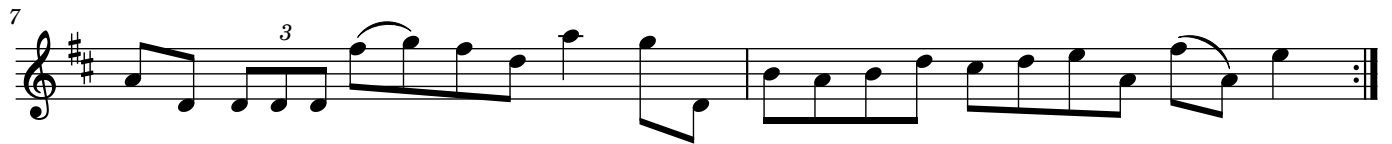
Reel



# Sean Maddocks

Composed by John C Grant

Reel



# Tarbolton Gospel Hall

Composed by John C Grant

Reel

